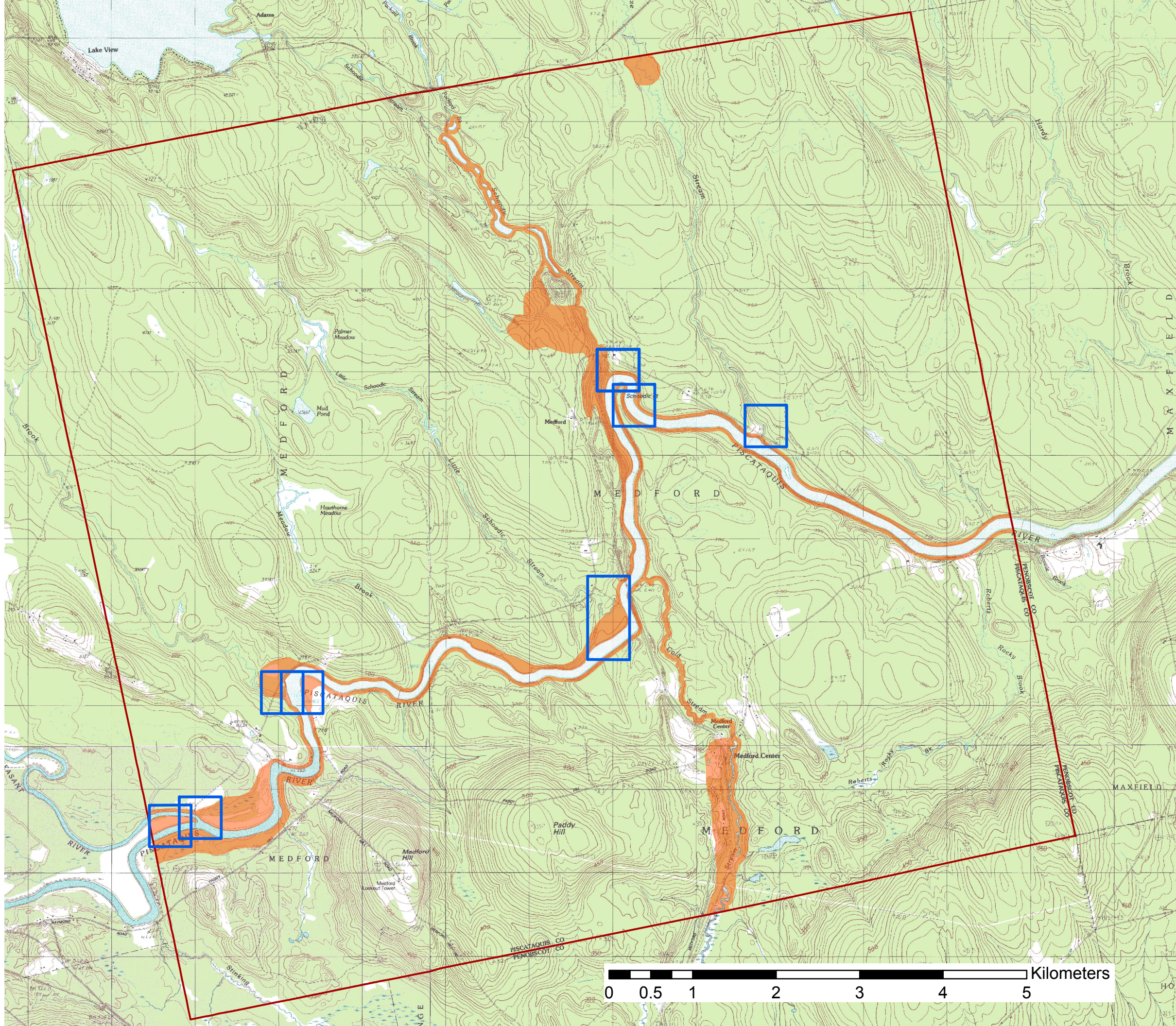




**Known Archaeological Sites* and
Areas Sensitive
for Preshistoric Archaeology* in
Medford**

**information provided by
Maine Historic Preservation Commission
January 2011**

*dated material subject to future revision
map 1/1



-  Areas sensitive for prehistoric archaeology
-  1/2 k square intersecting a known prehistoric archaeological site.

0 0.5 1 2 3 4 5 Kilometers